

FC adapters

Description:

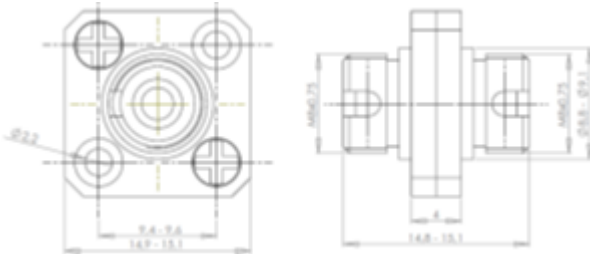
The FC adapters are designed and manufactured according JIS, IEC, EIA/TIA and ANSI specifications for intermateability and optical performance. The FC adapters are offered in MM or SM performances, for connectors with PC and APC polishing method. It is possible to exactly specify your demands concerning keying slot width (standard Seiko Instruments or Seikoh Giken) for APC adapters, type of sleeve (phosphor bronze or zirconia) and adapter performance: various shape of flange, D-hole, DD-hole, etc.



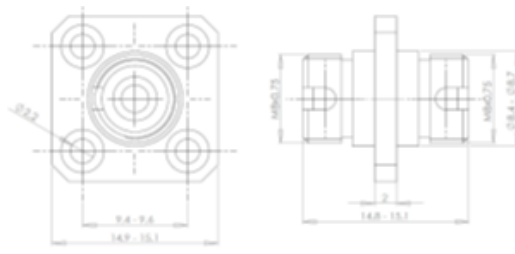
Features:

- Precision sleeve
- Screw-type locking
- Excellent detachability
- Low insertion loss
- Material metal
- High life time - more than 1000 mating cycles

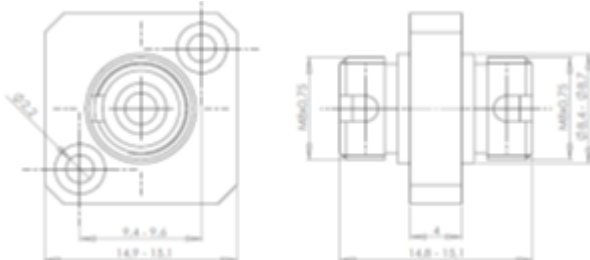
Specifications:



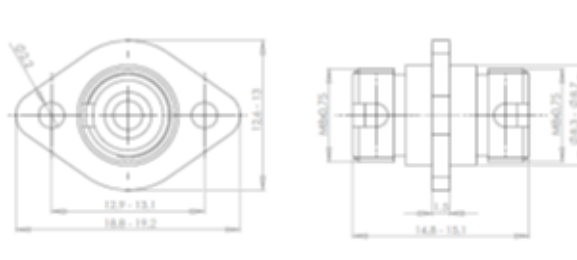
A-FC/(A) PC-XX-XXX-02



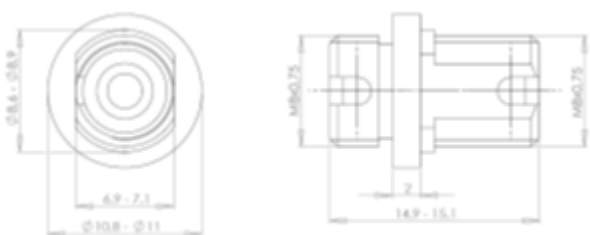
A-FC/(A)PC-XX-XXX-07



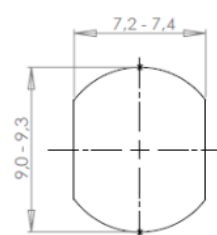
A-FC/(A)PC-XX-XXX-08



A-FC/(A)PC-XX-XXX-13



A-FC/(A)PC-XX-XXX-12



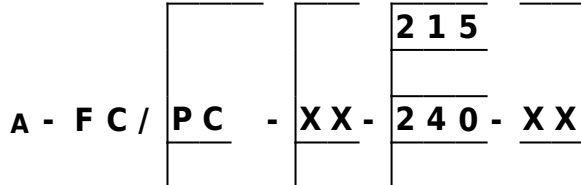
Recommended panel cut out

Application:

- PC standard
- APC standard: "wide key", "NTT" or "type N" "reduced" or "type R"

Ordering code:

A - F C / A P C - X X - 2 0 5 - X X



Polishing Method

Alignment Sleeve:

01 Zirconia
02 Phosphor Bronze

Width of Slots:

205 2.03-2.08
215 2.15-2.20
≥ 2.15
240 mm

Type of Flange:

square flange 15x15 mm
02 flange thickness 4.03 mm
assembled from two parts
07 flange thickness 2.03 mm
08 flange thickness 4.03 mm

circular flange, thickness 1.5 mm
11 D hole Ø 11 mm
12 DD hole Ø 11 mm
04 D hole Ø 14 mm
05 DD hole Ø 14 mm

oval flange
19x13mm
13 flange thickness 1.5 mm